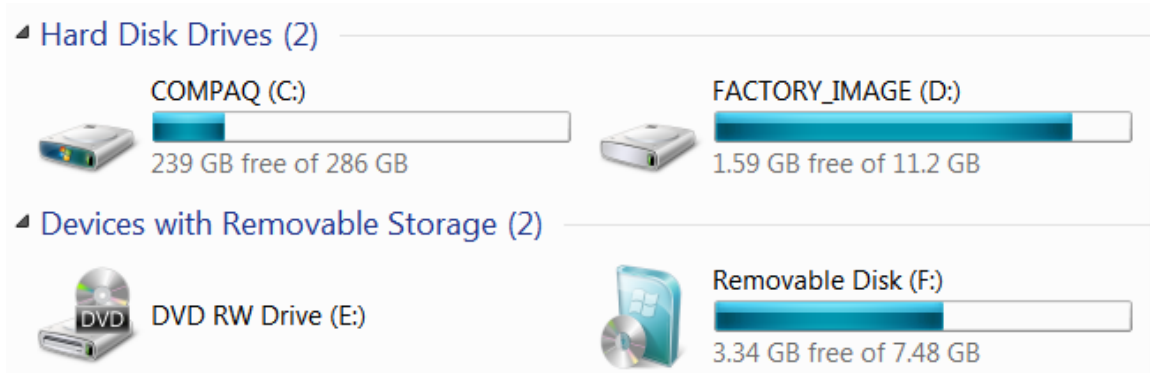


How to use CS Suite on a “Flash Drive.” A flash drive is a small storage device that plugs into your USB port – you can purchase them at any office supply store for under \$10.

CS Suite can be run entirely from the flash drive storing all program and data files on it; thus allowing you to take the flash drive with you, plug the flash drive into any other computer and run CS Suite from that computer.

To accomplish this, do the following:

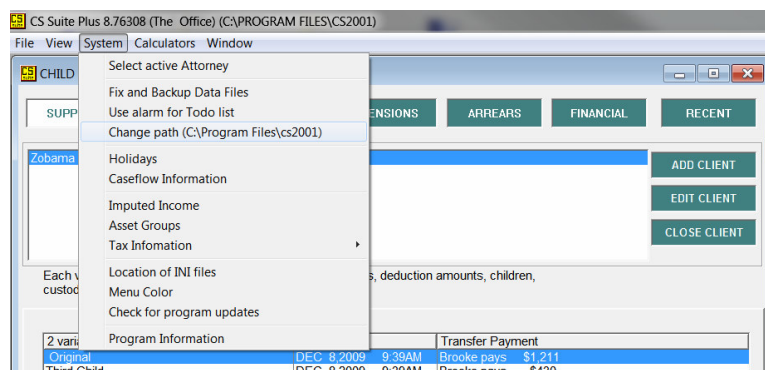
1. Copy ALL files from the CS Suite folder, usually located in C:\Program Files\cs2001
2. To the removable drive – in this case Removable Disk (F:).



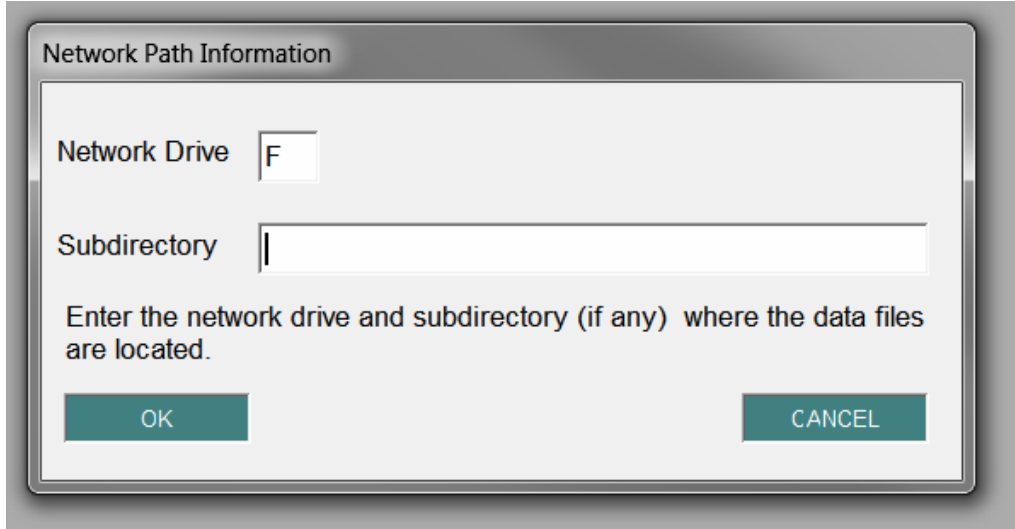
3. Next run CS Suite from the flash drive as follows: double-click on the Removable Disk icon to view its contents; look for a file named CS2009.EXE. Once you have located it, double-click on the icon next to CS2009.EXE and the software will start.

Name	Date modified	Type	Size
NewCSManual.pdf	11/20/2009 1:44 PM	PDF Document	3,863 KB
CS2009.EXE	12/2/2009 2:04 PM	Application	3,300 KB
TT2000.TPS	12/3/2009 9:47 AM	TPS File	1,099 KB
tpsfix.exe	5/5/2009 2:57 PM	Application	750 KB
CW2RUN32.DLL	4/17/2003 12:06 PM	Application extensi...	645 KB
TT2001.TPS	5/9/2003 8:05 AM	TPS File	75 KB
imputed.gif	10/2/2009 11:25 AM	GIF image	58 KB
formula.gif	12/29/2004 8:32 AM	GIF image	50 KB
INCOME.TPS	11/17/2009 2:12 PM	TPS File	48 KB

4. Once CS Suite has started, make sure you have selected the correct location for the data files as follows: Click on SYSTEM then click on Change path.



5. In the window that opens, enter the letter of the Removable Disk – in this case F. Delete any text in the Subdirectory entry. Then click on OK.



6. You are now running CS Suite and saving all the data to your flash drive. You won't have to redo this process of changing the network path, unless you plug in your flash drive to a computer that has assigned a different letter to the Removable Disk.