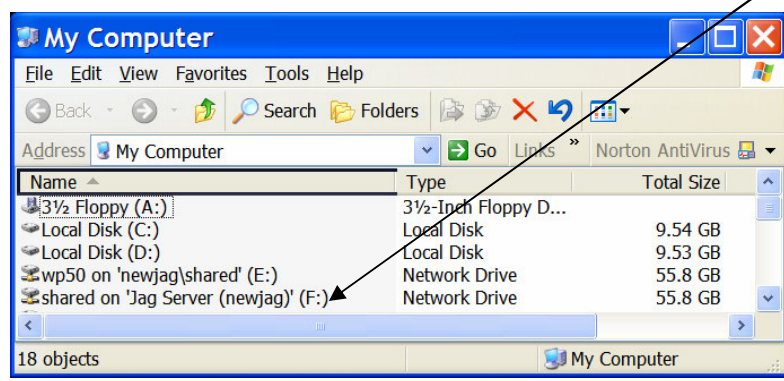


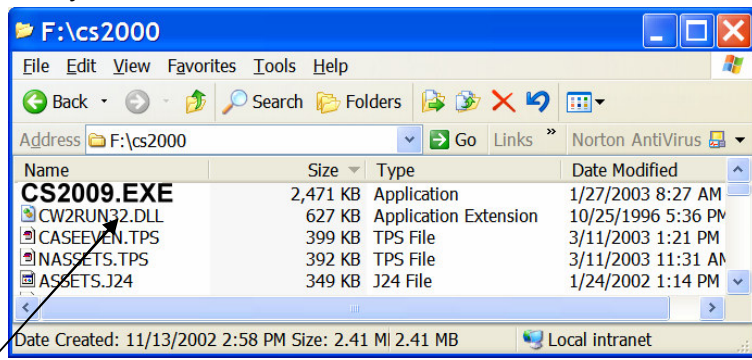
To install **CS SUITE** on network server

- Place the cd rom in the cd drive of the server.
- The installation program should automatically start.
- If the installation program does not automatically start, look at the contents of the cd rom on the network and look for a file called **CS Suite Plus** or **CS Suite Plus Update**.
- Once you have located that executable file, double click on it to run the installation.
- Follow the onscreen prompts making sure that you install the program on the server – in this case **Drive F**.

To install a shortcut on the desktop on each of the client computers do the following:  
 Open up the **My Computer** icon on your desktop and locate the mapped drive, in this case **Drive F**.



Open the mapped drive and directory where **CS PLUS** is located, in this case **Drive F** folder **cs2000**.



Right click on the filename **CS2009.EXE** and from the menu that appears, select **Send To** then **Desktop(create shortcut)**

